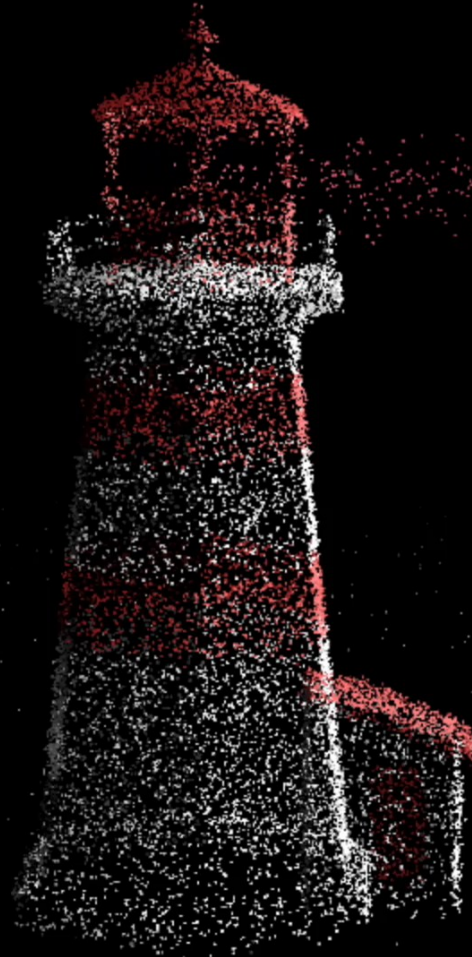


# The next era of policymaking

---

From reactive cycles  
to dynamic systems



# Table of contents




Trends  
transforming  
policymaking



The augmented  
policy cycle



Inside the policy  
cycle stages



The Ideation  
Center's policy  
intelligence suite



01

Emerging trends are transforming traditional policymaking  
and creating opportunities to rethink its future  
by leveraging new innovations





# From

## Reactive

where policies lag behind fast-evolving societal needs



# To

## Anticipatory participatory systems

that use foresight, horizon scanning, scenario planning, and predictive analytics to detect disruptions early and trigger timely policy analysis before risks materialize

Impact

Future-ready policies

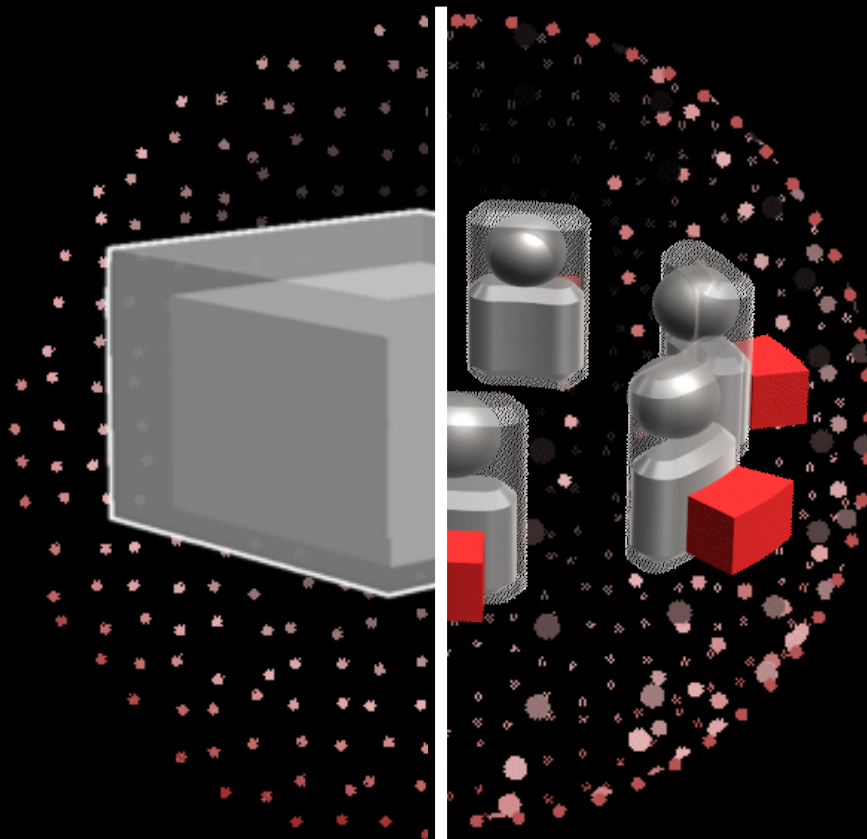




# From

## One-size-fits-all policies

designed around an imagined “average” citizen — often overlooking diverse needs and lived realities



# To

## Personalized and context-aware policy delivery

that applies data, behavioral insights, and human-centered design to tailor interventions to specific individuals, communities, and places, improving relevance, equity, and trust

Impact

Citizen-centric interventions and outcomes





# From

## Linear policymaking

that assumes a predictable path to scale and generates learning only after policy implementation



# To

## Iterative policy sandboxing

that creates safe, real-world prototyping, testing, and refinement before policies scale. This grounds decisions in real behavior, reducing risks and accelerating innovation

Impact

De-risked scale up,  
and evidence-led  
innovation





# From

## Static, retrospective evidence

based on periodic reports and lagging indicators



# To

## Real-time intelligence

powered by advanced analytics, live data streams, and connected ecosystems, enabling continuous sensing, proactive decision-making

Impact

Decision agility and dynamic course correction

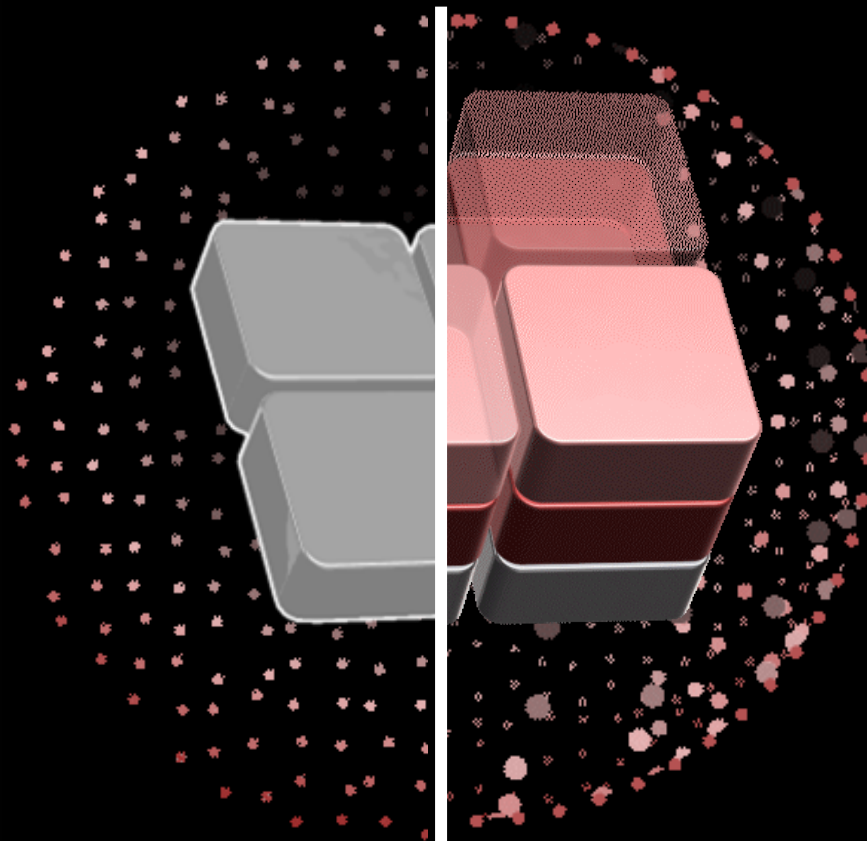




# From

## Fixed review cycles

that struggle to keep pace with  
fast-changing realities



# To

## Adaptive policy systems

that embed continuous learning  
and feedback loops across the  
policy cycle, shaping policies to  
evolve with real-world complexity  
and shifting citizen needs

Impact

Continuous learning  
systems



# From

## Siloed policymaking

constrained within single institutions or sectors  
restraining information flow,  
limiting collaboration, and  
weakening coordination  
on complex cross-cutting  
challenges



# To

## Networked and systemic governance

that mobilizes government, the private sector, academia, and citizens as co-designers of solutions, aligning incentives across actors and driving collective action that delivers durable, system-wide public value

Impact

Systemic and integrated governance



### From

### To

Reactive

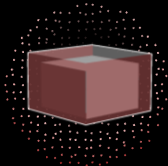


01

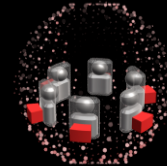


Anticipatory and participatory foresight

One-size-fits-all policies



02



Personalized and context-aware policy delivery

Linear policymaking



03



Iterative policy sandboxing

Static, retrospective evidence

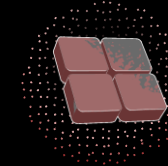


04

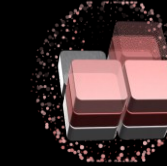


Real-time intelligence

Fixed review cycles

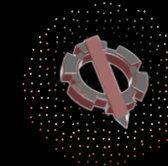


05

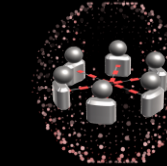


Adaptive policy systems

Siloed policymaking



06



Networked and systemic governance





Capabilities within the policy cycle are  
evolving from traditional ways ...





... and are being enhanced to help policymakers future-proof policies, meet citizens' needs, and operate more efficiently and intelligently





# The current policy cycle





# The augmented policy cycle





# The augmented policy cycle

## Capabilities reimagined

# 01

## Policy analysis

### Anticipatory foresight

Policy analysis continuously senses weak signals, explores future scenarios, and proactively reframes policy questions before risks and opportunities fully materialize.

Leverages **horizon scanning**, **scenario planning**, and **predictive analytics** to anticipate risks and shape proactive policy responses

[Learn more](#)





# The augmented policy cycle

## Capabilities reimaged

# 02

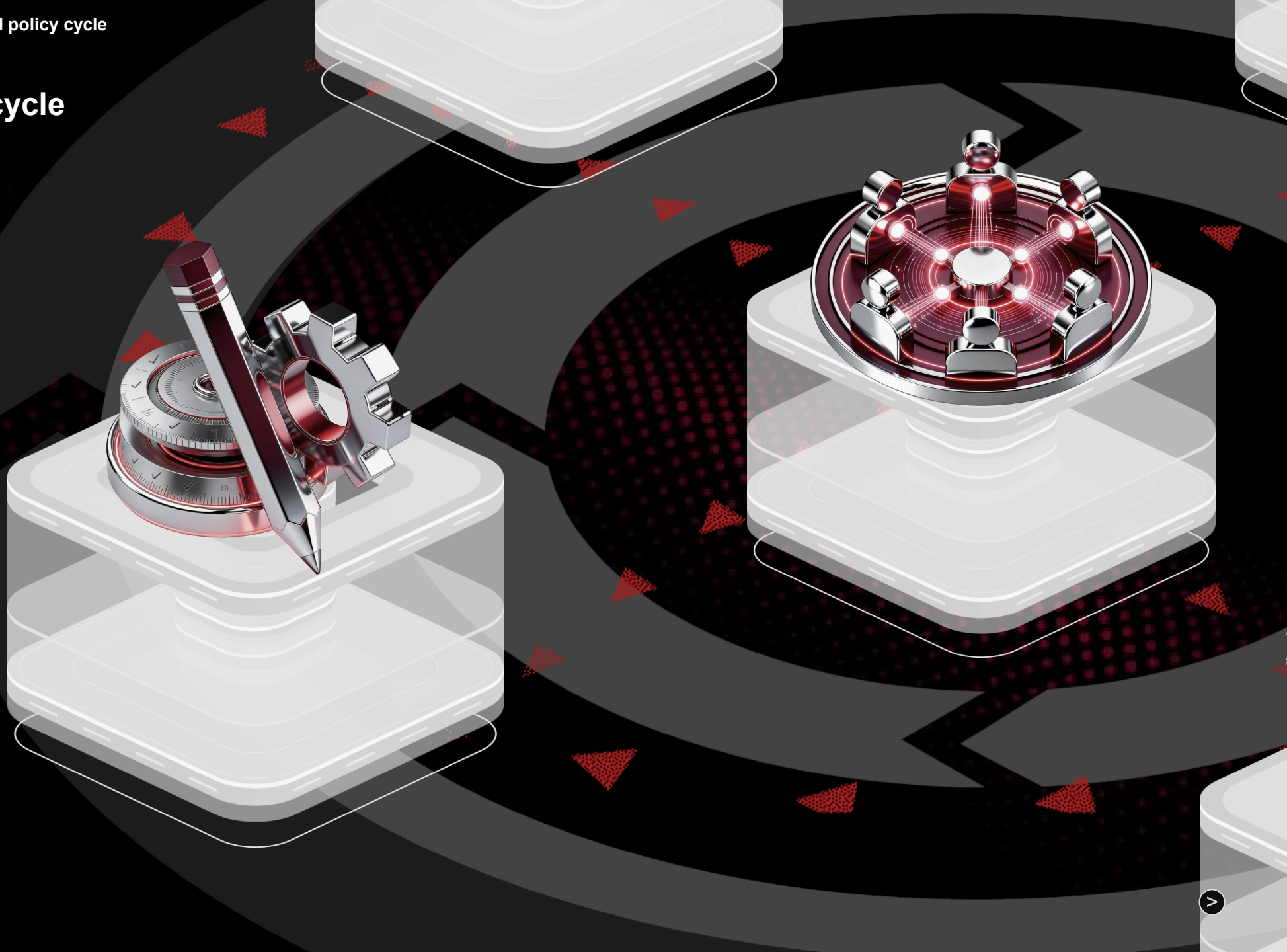
## Policy design

### Personalized delivery; Policy sandboxing

Policy design evolves into a human-centered, data-driven, and experimental approach that personalizes interventions and tests options through sandboxes and simulations before scaling.

Tailors interventions to individual and community needs using **data and human-centered design**, ensuring relevant, equitable, and trusted outcomes

[Learn more](#)





# The augmented policy cycle

## Capabilities reimagined

# 03

## Policy implementation

### Real-time intelligence

Policy implementation becomes adaptive and intelligence-led, using real-time data, predictive analytics, and sentiment sensing to target enforcement, adjust delivery, and learn continuously as outcomes emerge.

Uses advanced analytics and connected data ecosystems to **deliver real-time insights**, enabling more proactive, agile, and impact-driven decisions

[Learn more](#)





# The augmented policy cycle

## Capabilities reimagined

# 04

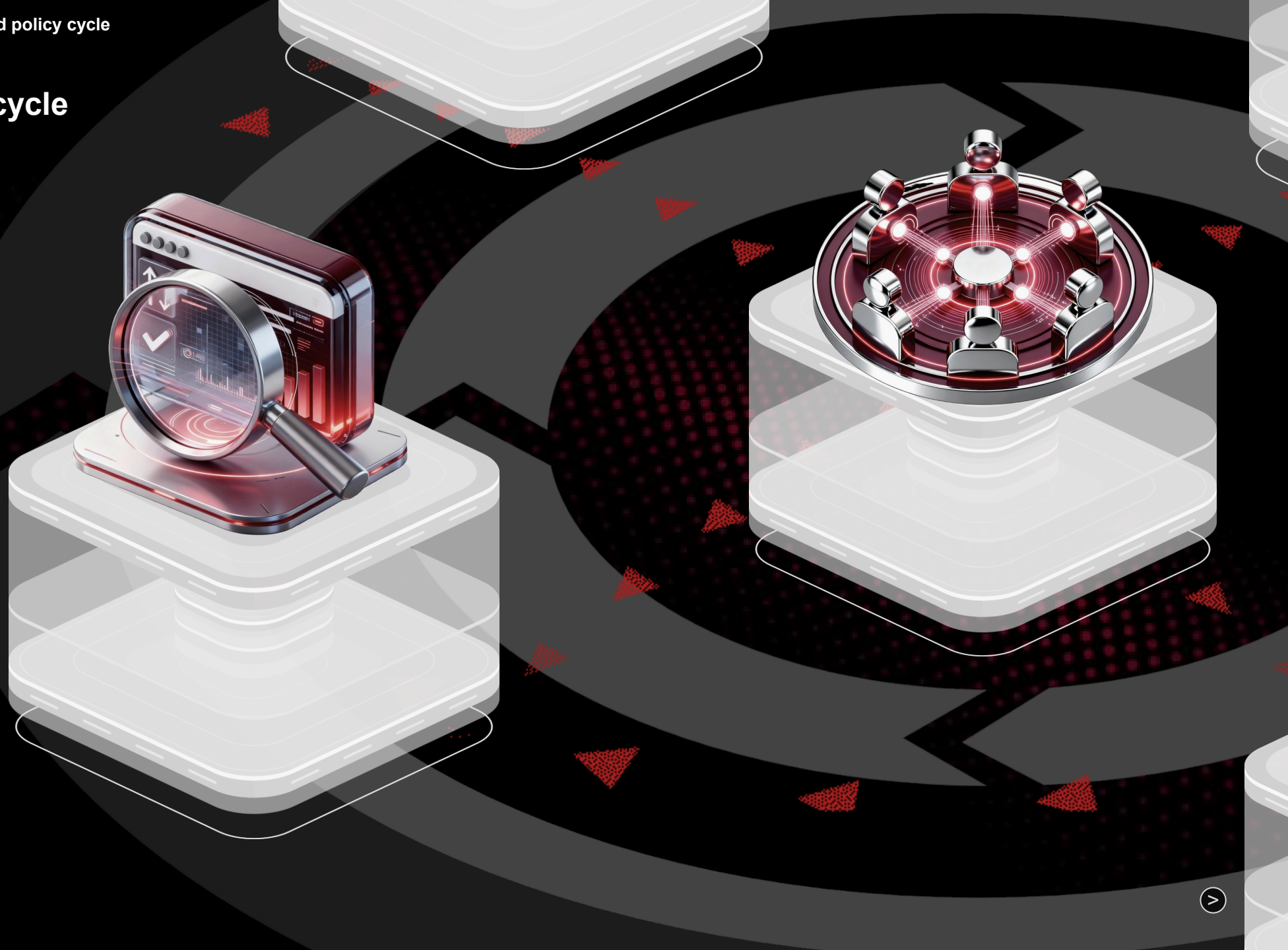
Policy evaluation

### Adaptive policy systems

Policy evaluation transforms into a live decision-support function that continuously measures impact, value for money, and unintended effects to enable rapid course correction.

Embeds **iterative feedback and reflection** into every stage of the policy cycle to enable rapid adaptation to real-world complexities and evolving citizen needs

[Learn more](#)





# The augmented policy cycle

## Capabilities reimagined

# 05

Stakeholder engagement

### Networked and systemic governance

Stakeholder engagement is continuous, enabling system-level co-creation, mobilizing networks of actors as aligned co-designers and co-deliverers across the overall process.

Fosters **ecosystem-based governance** by engaging government across sectors, the private sector, academia, and citizens in co-designing solutions and steering system-wide outcomes

[Learn more](#)





# The augmented policy cycle





# 01



The augmented policy cycle

## Policy analysis

### Anticipatory foresight

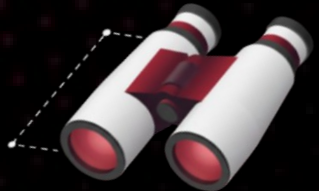
Policy analysis once relied on visible problems, political pressure, or retrospective performance gaps to trigger action. Today, anticipatory foresight is enabling analysis to begin earlier—often before issues fully materialize.

Weak signals that were previously difficult to detect are becoming clearer, as emerging risks and early societal shifts are identified continually in data, public discourse, and operational systems. Horizon scanning, scenario exploration, and predictive analytics help policymakers understand not only what is happening, but what could happen across multiple possible futures.

This phenomenon analysis from backward-looking diagnosis to proactive sensemaking, continually reframing policy questions, stress-testing assumptions, and informing agenda-setting in advance.



#### IDEATION CENTER POLICY INTELLIGENCE



### Foresight radar

A digital strategic tool designed to monitor, visualize, and analyze emerging trends, signals, and potential disruptions, enabling proactive decision-making



### Risk register

A strategic tool that identifies, evaluates, and tracks risks, along with their mitigation plans, to enhance policy resilience





The augmented policy cycle

# 02

## Policy design

**Personalized delivery;  
Policy sandboxing**

Policy design used to rely on standardized solutions built around assumed averages or static evidence. Now, advances in data, behavioral insights, and human-centered approaches ground design in how different groups actually live, make decisions, and experience public services.

This shift enables personalized policy delivery: targeted interventions tailored to the specific needs and constraints of diverse populations, making policies more relevant, equitable, and effective.

At the same time, policy sandboxing is transforming design from a single, linear decision into an iterative, experimental process. Through simulations, digital twins, and controlled testing environments, policymakers can test and refine options before full-scale implementation, uncovering system-wide interactions, behavioral responses, and distributional impacts early.



IDEATION CENTER POLICY INTELLIGENCE



### Experimenta

An online experimentation tool kit designed to help policymakers rapidly generate empirical, actionable evidence through modular behavioral trials



### Policy bot

AI-powered engine that automates policy research and benchmarking, combining expert reasoning with machine precision to accelerate evidence-based policymaking





The augmented policy cycle

## 03

## Policy implementation

## Real-time intelligence

Implementation is no longer a static execution phase.

Integrated data streams now feed into real-time dashboards that track shifting key performance indicators, compliance gaps, and operational issues as they emerge. Advanced analytics and predictive modeling flag enforcement risks early, allowing for targeted, timely interventions.

Impact simulators allow regulators to test enforcement and delivery adjustments before deploying them, reducing unintended consequences. In addition, policy pulse platforms and geospatial intelligence sense public sentiment and readiness in real time, guiding adaptive rollout decisions.

Together, these real-time intelligence tools enable responsive monitoring, smarter enforcement, and proactive governance, generating continuous learning across the entire policy life cycle.



## IDEATION CENTER POLICY INTELLIGENCE

**Sentiment analysis**

The process of using AI and language models to analyze textual data and classify sentiment, providing an overall pulse of public opinion

**Policy pulse**

A real-time intelligence tool to measure visibility, resonance, and responsiveness of government policies to public discourse





## 04



The augmented policy cycle

## Policy evaluation

## Adaptive policy systems

Policy evaluation traditionally focused on assessing outcomes after implementation.

Now, evaluation is a live intelligence-driven function embedded throughout the cycle. Continuous data flows, advanced analytics, and learning-oriented frameworks transform evaluation into active, real-time decision support.

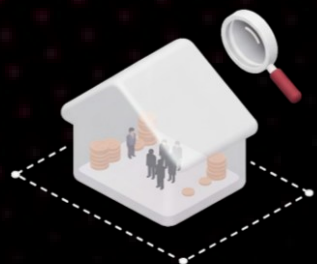
Impact assessment tools provide timely, evidence-based estimates of economic, social, and distributional effects, enabling policymakers to compare interventions, detect unintended consequences early, and refine policies on the fly.

Value-for-money analysis systematically links outcomes to costs, strengthening fiscal discipline. Machine learning models surface emerging trends, behavioral responses, and long-term outcome trajectories, institutionalizing near-real-time feedback loops.

Together, these capabilities enable dynamic course correction, smarter resource reallocation, and more resilient policies that evolve with changing conditions, implementation realities, and citizen needs.



## IDEATION CENTER POLICY INTELLIGENCE

**Rapid impact assessment tool**

A fast, evidence-based tool for ex ante and ex post evaluations that estimates the economic and social impacts of policy interventions

**Value-for-money tool**

A cost-benefit tool that measures the efficiency and effectiveness of public spending by linking policy costs with anticipated returns





## 05

← The augmented policy cycle

Policymaking is shifting from siloed, periodic consultation to networked, systemic governance that shapes the entire policy cycle. AI-enabled system maps reveal interdependencies, incentives, and feedback loops across government, the private sector, academia, and civil society, creating a shared understanding of complex challenges and allowing for better coordinated action.

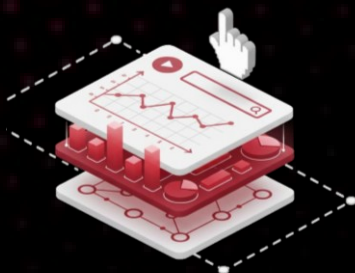
Rather than experiencing ad hoc coordination, stakeholders are mobilized as co-designers and co-deliverers, with aligned roles and accountability for common outcomes. This system-level approach strengthens coherence, partnership durability, and collective action. This means that policymaking becomes a shared endeavor, harnessing collective intelligence and strengthening legitimacy, accountability, trust, and long-term impact.

Stakeholder engagement

**Networked and systemic governance**

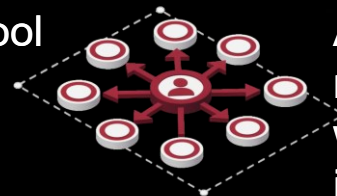


IDEATION CENTER POLICY INTELLIGENCE



### AI-enabled system compass

A dynamic, evidence-backed decision tool that transforms static diagrams into interactive platforms to visualize interconnections, run scenario simulations, and query results in real time



### Social network analysis

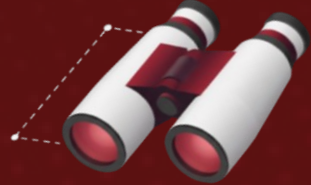
A mapping and measurement of relationships, connections, and interactions within a network to uncover patterns of influence, data flow, and collaboration





# The Ideation Center's policy intelligence suite offers a wide range of tools that enable an augmentation of the policymaking cycle

## Ideation Center's policy intelligence suite (1/2)



**Foresight radar**

A digital strategic tool designed to monitor, visualize, and analyze emerging trends, signals, and potential disruptions, enabling proactive decision-making



**Risk register**

A strategic tool that identifies, evaluates and tracks risks, along with their mitigation plans, to enhance policy resilience



**Policy bot**

AI-powered engine that automates policy research and benchmarking, combining expert reasoning with machine precision to accelerate evidence-based policy making



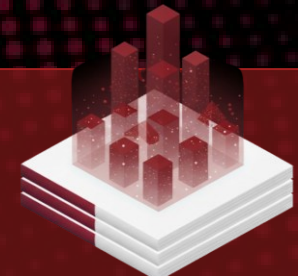
**Policy pulse**

A real-time intelligence tool that measures the visibility, resonance, and responsiveness of government policies to public discourse, translating media and social sentiment into actionable insights for better policy design and implementation



**Experimenta**

An online experimentation tool kit designed to help policymakers rapidly generate empirical, actionable evidence through modular behavioral trials



**Impact simulator**

A data-driven modeling tool that quantifies how policy actions influence performance pillars and socioeconomic outcomes





# The Ideation Center's policy intelligence suite offers a wide range of tools that enable an augmentation of the policymaking cycle

## Ideation Center's policy intelligence suite (2/2)



**AI-enabled system compass**

Dynamic, evidence-backed decision tools that transform static diagrams into interactive platforms, allowing policymakers to visualize interconnections, run scenario simulations, and query results in real-time



**Rapid impact assessment tool**

A fast, evidence-based tool for ex ante and ex post evaluations that estimates the economic and social impacts of policy interventions



**Value-for-money tool**

A cost-benefit analysis tool that measures the efficiency and effectiveness of public spending by linking policy costs with anticipated returns



**Social network analysis**

The process of mapping and measuring relationships, connections, and interactions within a network – such as individuals, organizations, or systems – to uncover patterns of influence, information flow, and collaboration



**Sentiment analysis**

The process of using AI and language models to analyze textual data and classify sentiment, providing an overall pulse of public opinion

